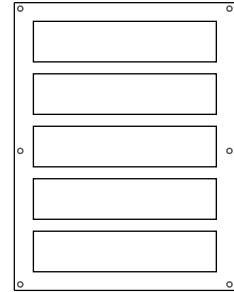


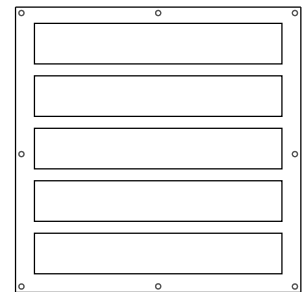
DW Cutout Shelf panels



A Back Panel x 1



DWL.31.90.CUTO.SHLF.5.XX



DWL.31.105.CUTO.SHLF.5.XX

B Shelf x 5

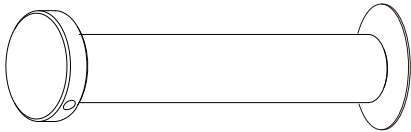


DWL.31.90.CUTO.SHLF.5.XX



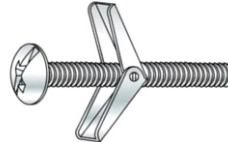
DWL.31.105.CUTO.SHLF.5.XX

C 3" standoff



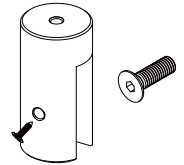
DWL.31.90.CUTO.SHLF.5 x6 DWL.31.105.CUTO.SHLF.5 x8

D Butterfly Anchors + Screws

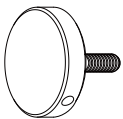


DWL.31.90.CUTO.SHLF.5 x6 DWL.31.105.CUTO.SHLF.5 x8

E



DWL.31.90.CUTO.SHLF.5 x15
DWL.31.105.CUTO.SHLF.5 x15



Standoff Cap
13.15.20.25-CAP



Upper Inside Threaded Barrel
13.15.20.25-BAR



Standoff Cylinder
13.15.20.25-CYL



Standoff Screw
13.15.20.25-SCR



Lower Inside Threaded Barrel
13.15.20.25-BAR



Standoff Washer
13.15.20.25-WSH

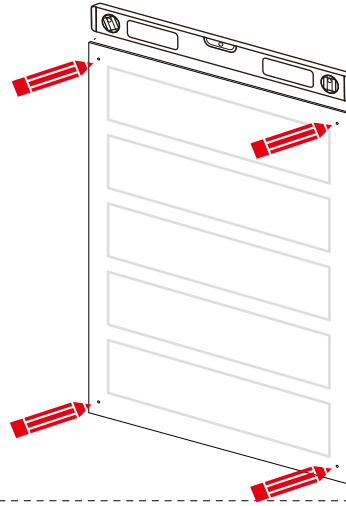


Toggle Bolt



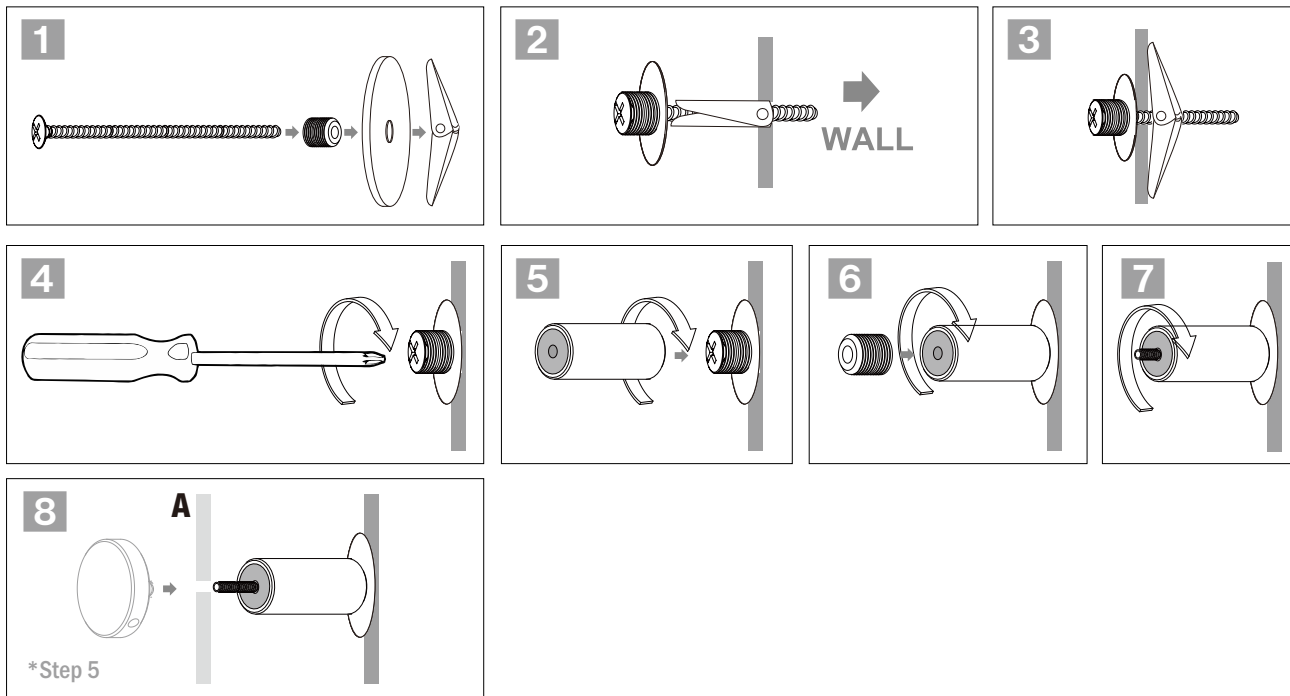
Place the back panel on the wall and mark standoff holes.

Step 1

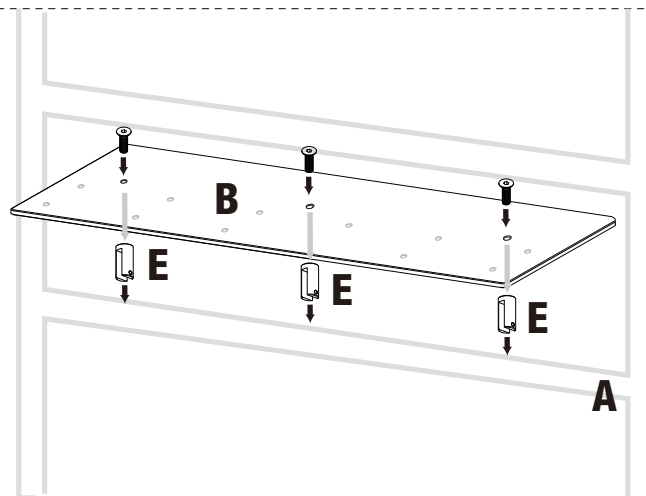


Install the standoffs on the marked spots on the wall

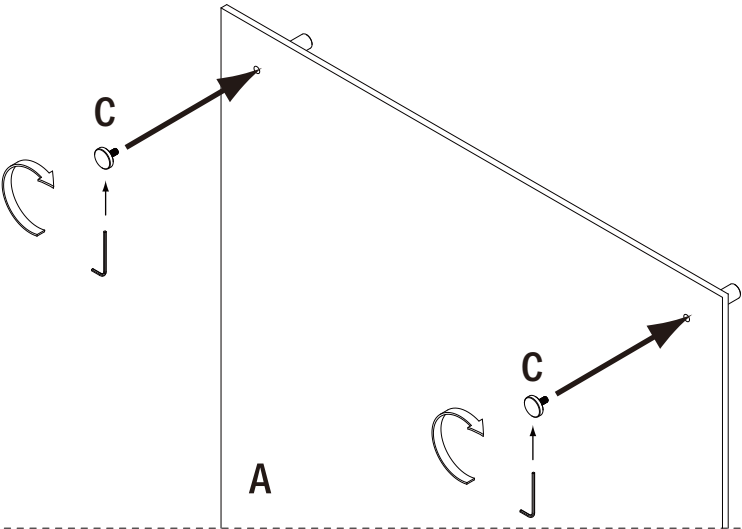
Step 2



Step 3



Place the complete panel and shelves on to the standoffs
and secure them with the caps



Step 4