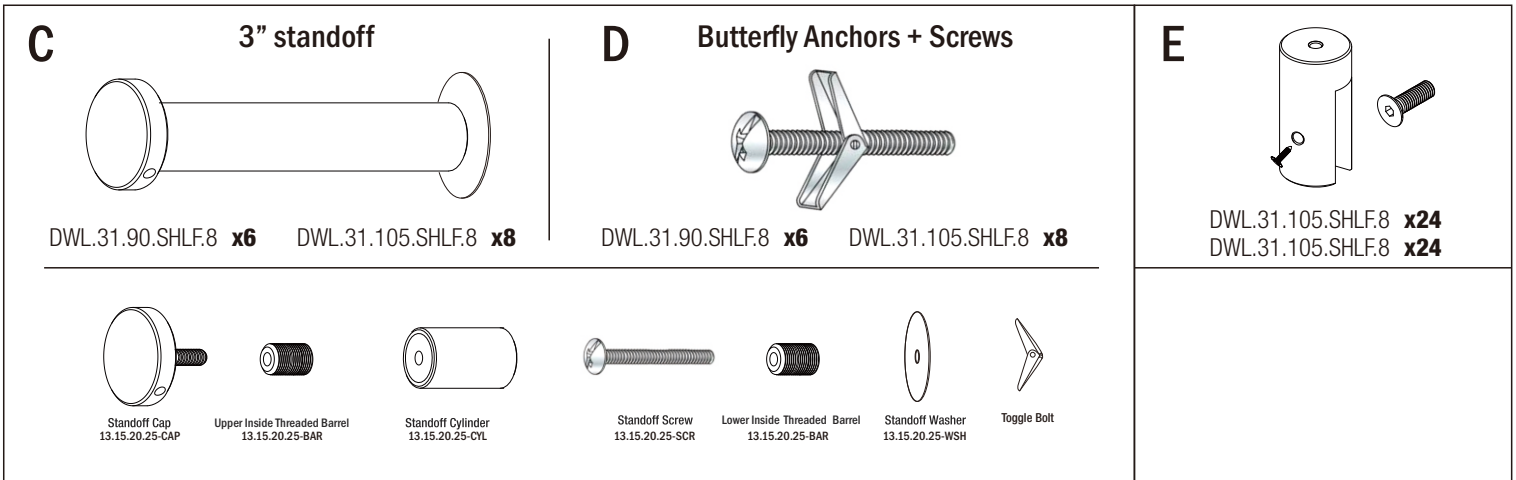
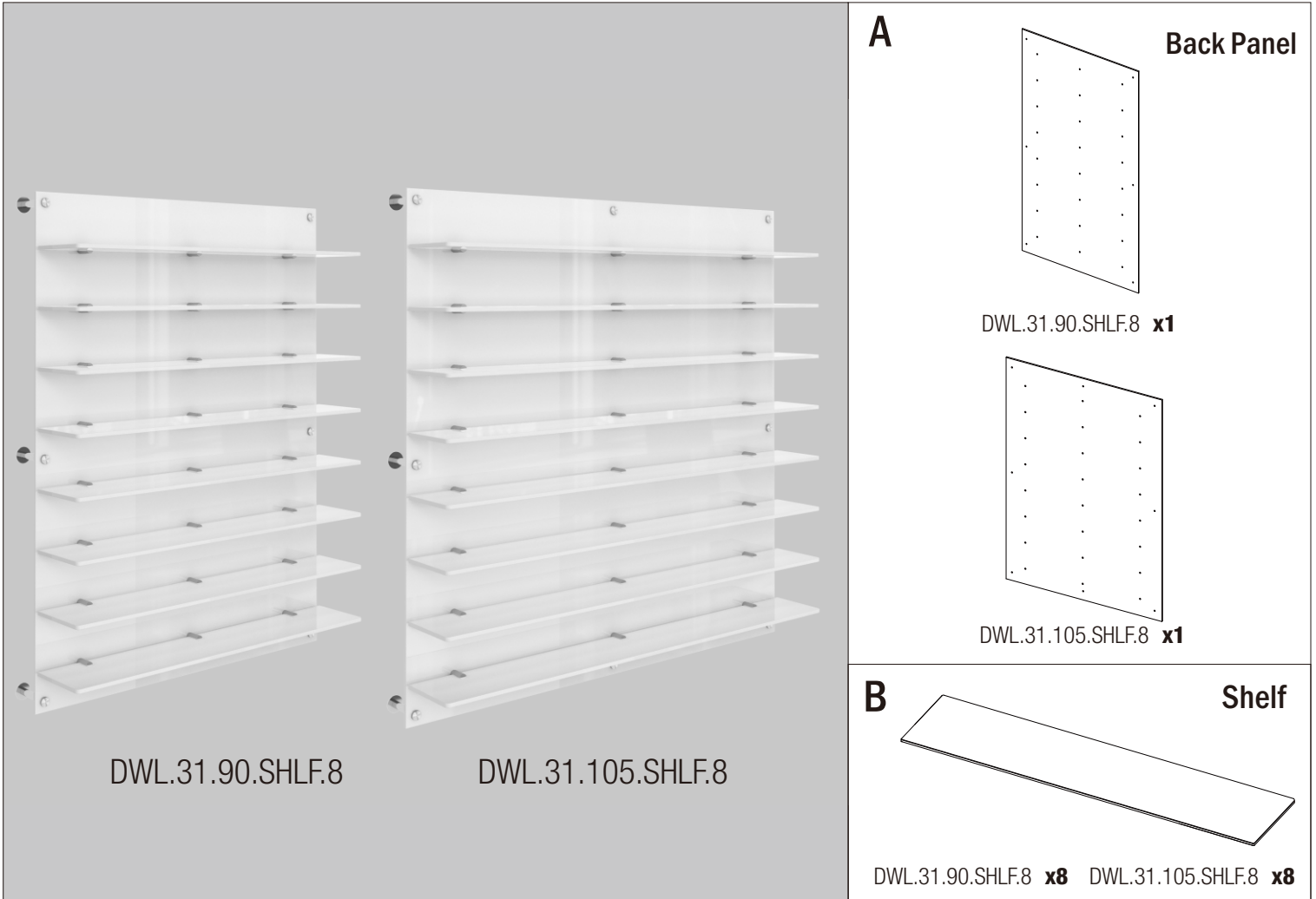
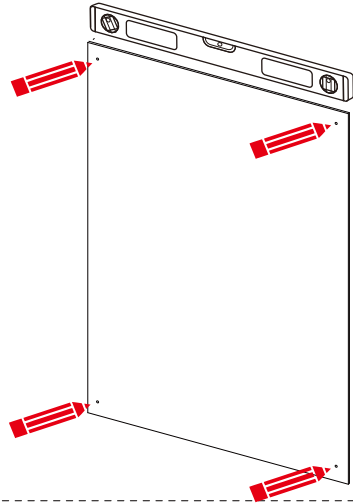


# DW Shelf panels

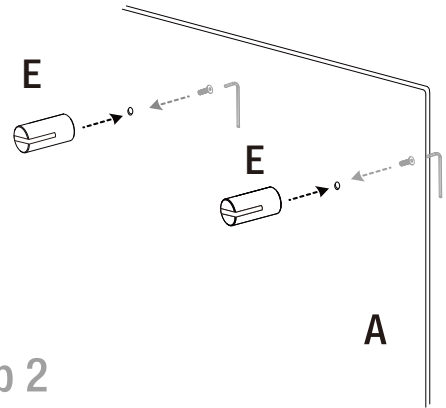


Place the back panel on the wall and mark standoff holes.



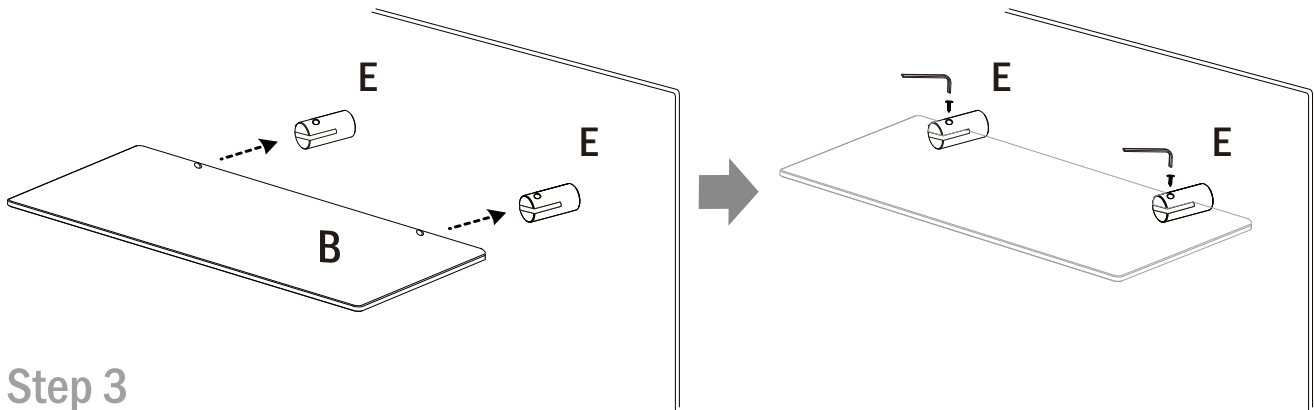
Step 1

Secure the shelf standoffs with the provided screws from the back



Step 2

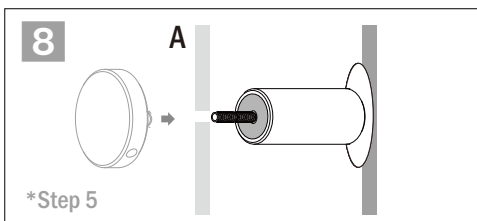
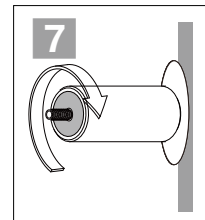
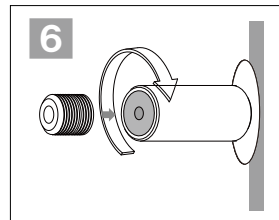
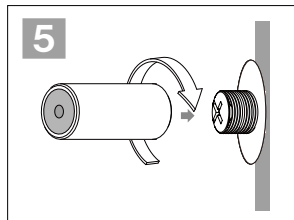
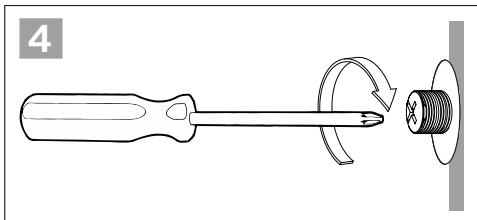
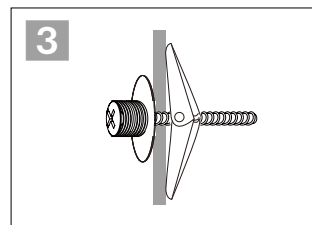
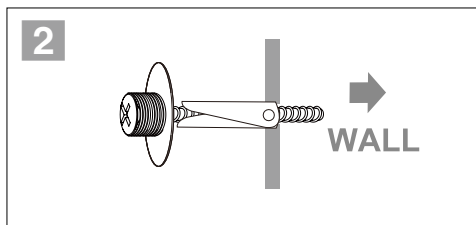
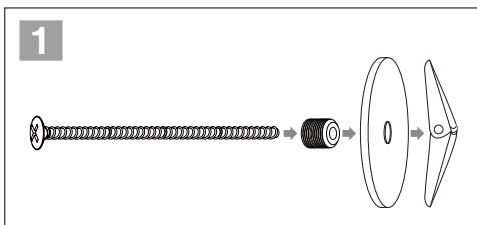
Place your shelves into the shelf standoffs and secure by tightening the set screws with provided hex wrench.



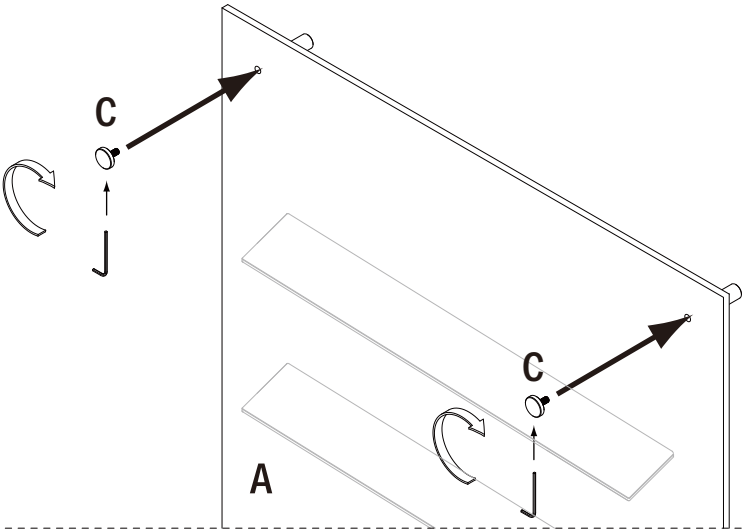
Step 3

Install the standoffs on the marked spots on the wall

Step 4



Place the complete panel and shelves on to the standoffs  
and secure them with the caps



Step 5