

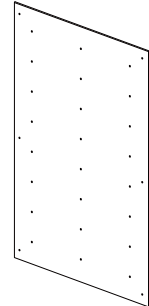
# Lockable DW Shelf panels



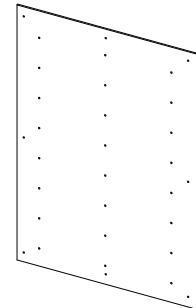
DWL.31.90.SHLF.8.XX.LOCK

DWL.31.105.SHLF.8.XX.LOCK

## A Back Panel

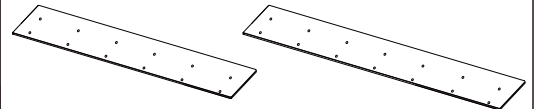


DWL.31.90.SHLF.8.XX.LOCK **x1**



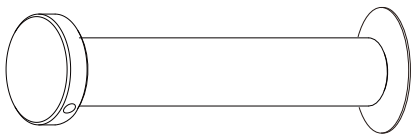
DWL.31.105.SHLF.8.XX.LOCK **x1**

## B Shelf



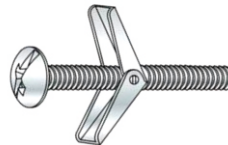
DWL.31.90.SHLF.8.XX.LOCK **x8** DWL.31.105.SHLF.8.XX.LOCK **x8**

## C 3" standoff



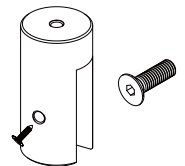
DWL.31.90.SHLF.8.XX.LOCK **x6** DWL.31.105.SHLF.8.XX.LOCK **x8**

## D Butterfly Anchors + Screws



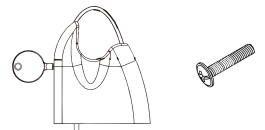
DWL.31.90.SHLF.8.XX.LOCK **x6** DWL.31.105.SHLF.8.XX.LOCK **x8**

## E

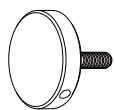


DWL.31.90.SHLF.8.XX.LOCK **x24**  
DWL.31.105.SHLF.8.XX.LOCK **x24**

## F



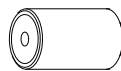
DWL.31.90.SHLF.8.XX.LOCK **x48**  
DWL.31.105.SHLF.8.XX.LOCK **x56**



Standoff Cap  
13.15.20.25-CAP



Upper Inside Threaded Barrel  
13.15.20.25-BAR



Standoff Cylinder  
13.15.20.25-CYL



Standoff Screw  
13.15.20.25-SCR



Lower Inside Threaded Barrel  
13.15.20.25-BAR



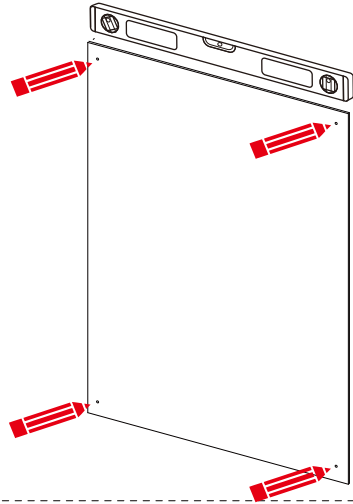
Standoff Washer  
13.15.20.25-WSH



Toggle Bolt

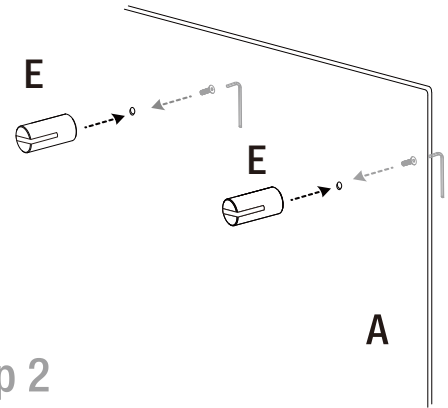


Place the back panel on the wall and mark standoff holes.



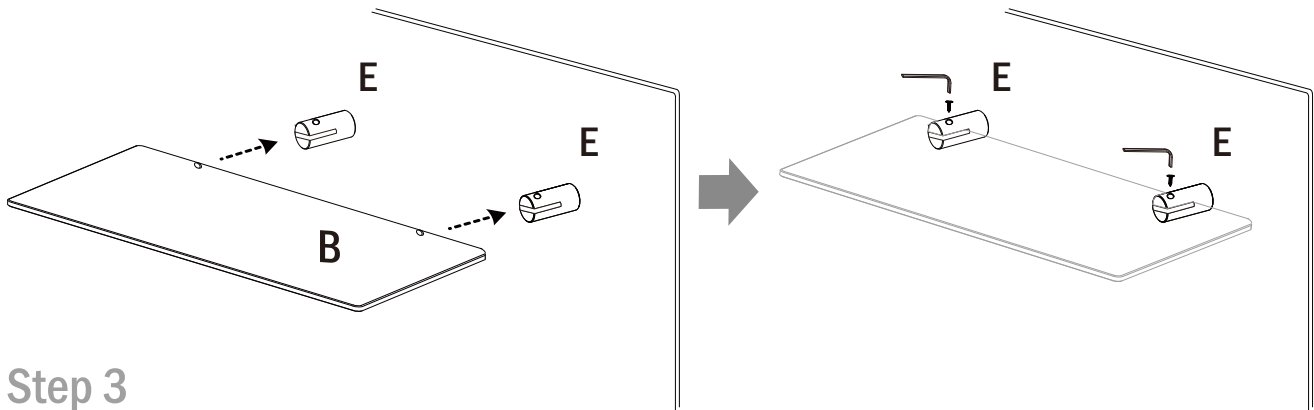
Step 1

Secure the shelf standoffs with the provided screws from the back



Step 2

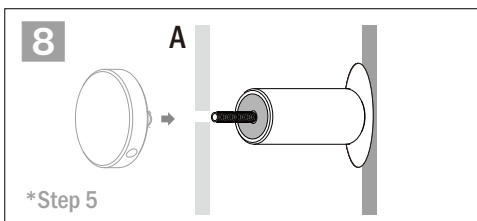
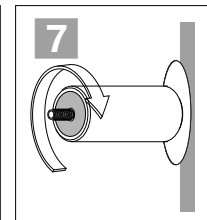
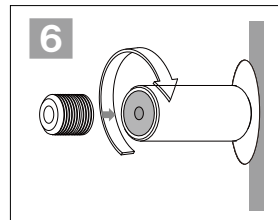
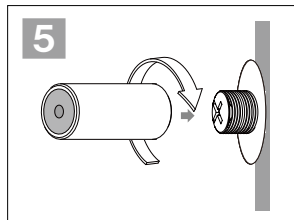
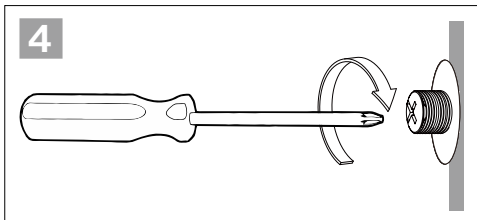
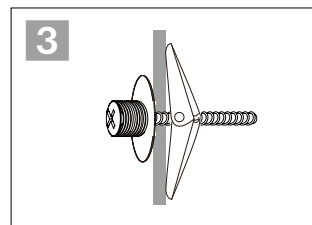
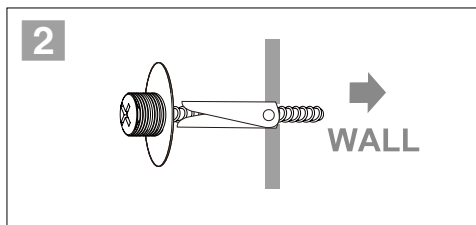
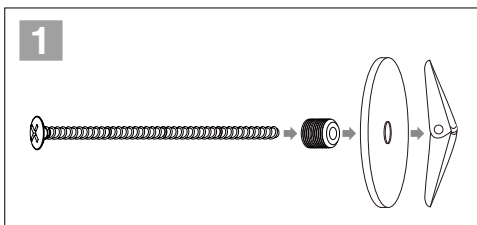
Place your shelves into the shelf standoffs and secure by tightening the set screws with provided hex wrench.



Step 3

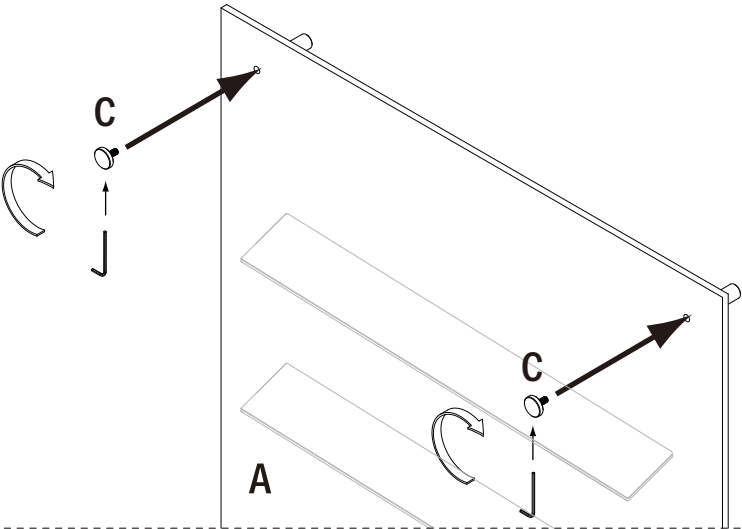
Install the standoffs on the marked spots on the wall

Step 4



Place the complete panel and shelves on to the standoffs  
and secure them with the caps

Step 5



Step 6

