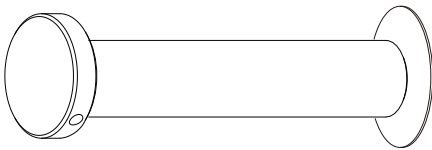
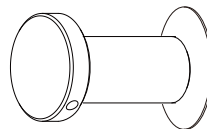


for the round panel



x 5

for the frame

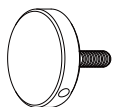


x 8

pin



x 68



Standoff Cap
13.15.20.85-CAP



Upper Inside Threaded Barrel
13.15.20.85-BAR



Standoff Cylinder
13.15.20.85-CYL



Standoff Screw
13.15.20.85-SCR



Lower Inside Threaded Barrel
13.15.20.85-BAR



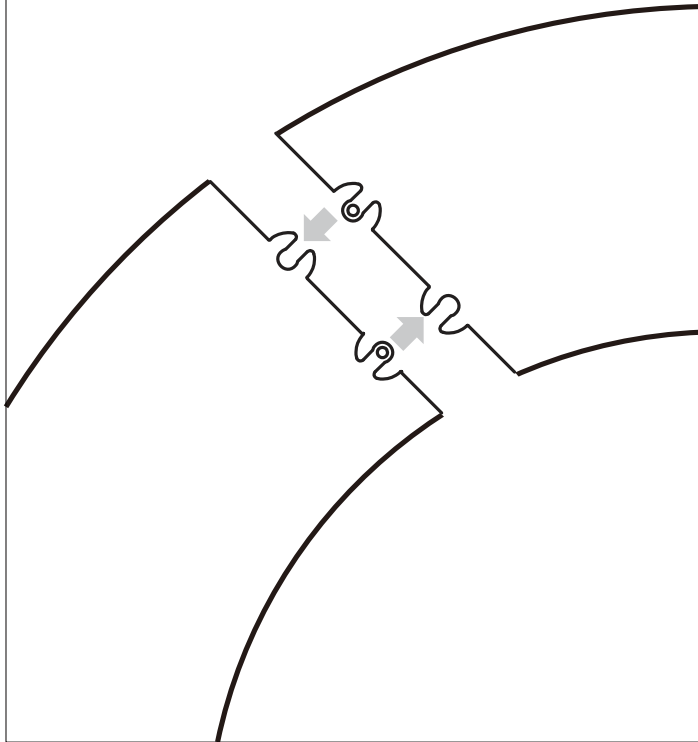
Standoff Washer
13.15.20.85-WSH



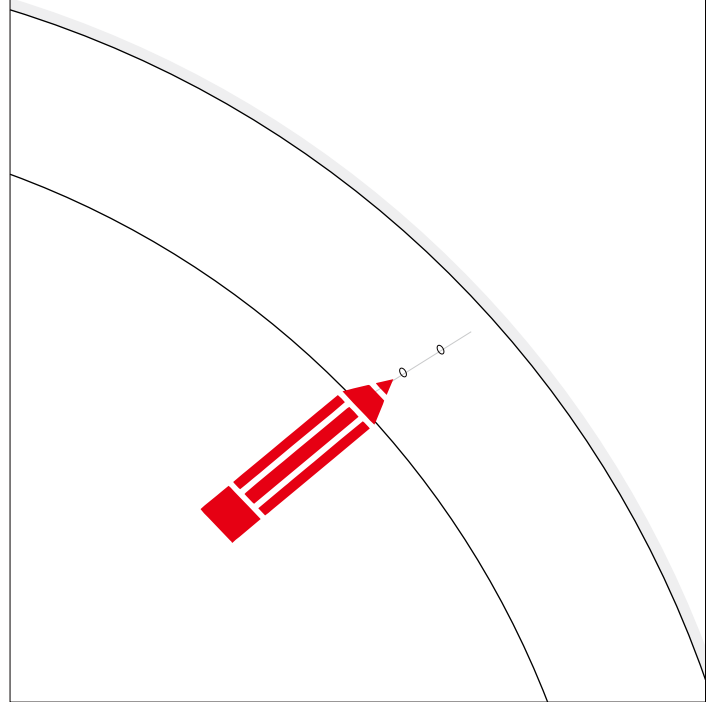
Toggle Bolt

FRAME WALL MOUNTING

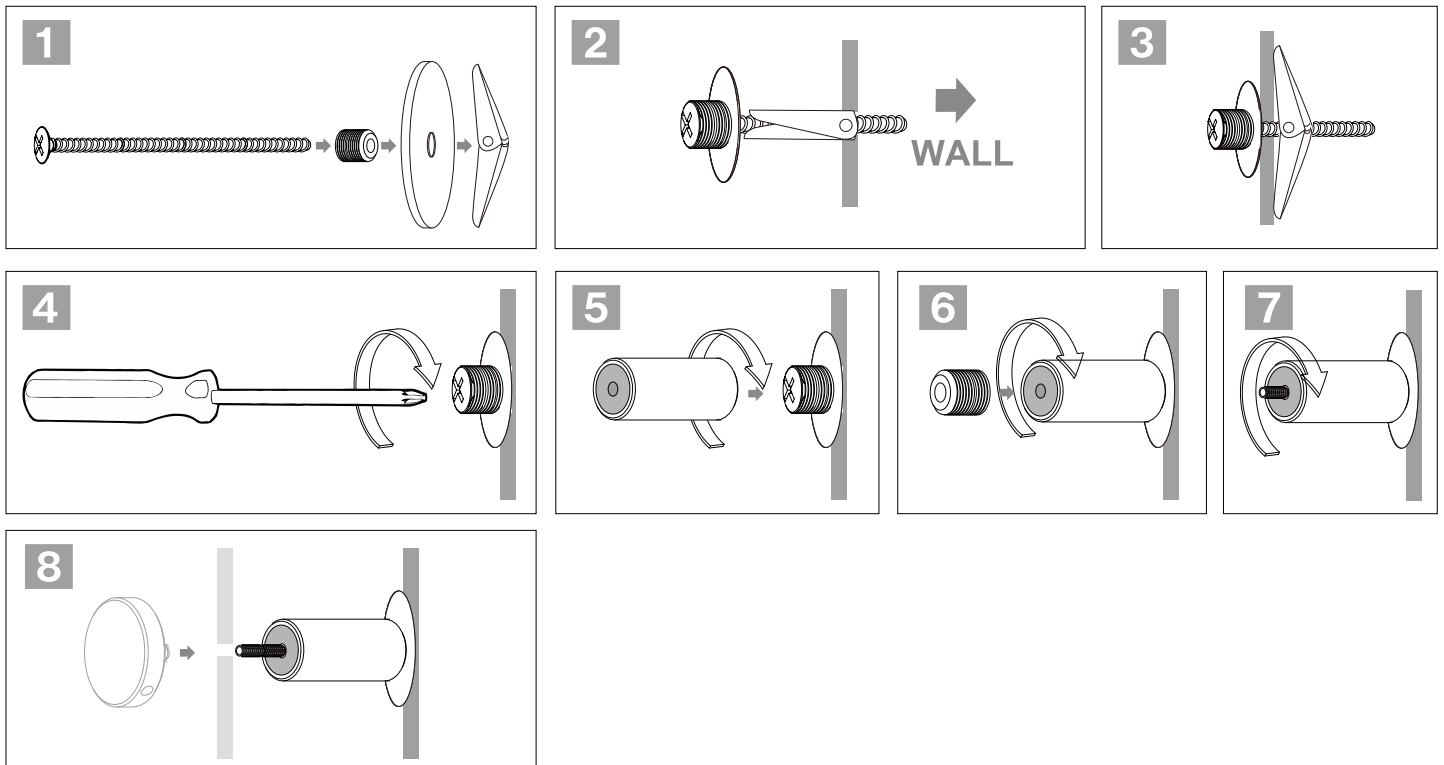
Corners of Acrylic frames interlock and attached to the wall with 1" standoffs.



Place the back panel on the wall and mark standoff holes.

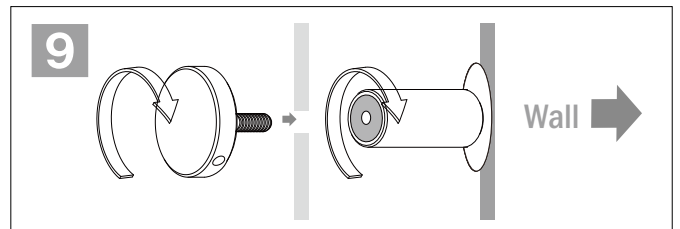
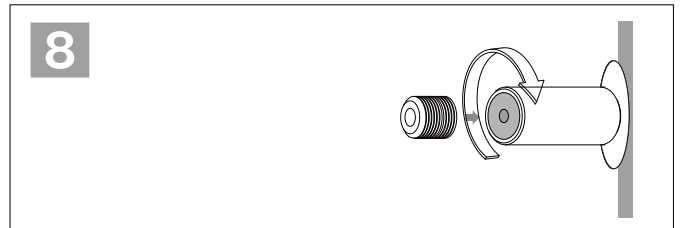
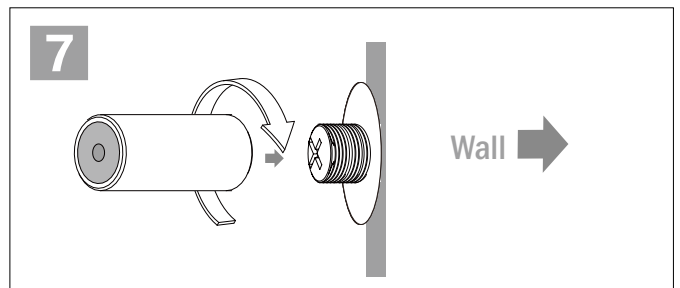
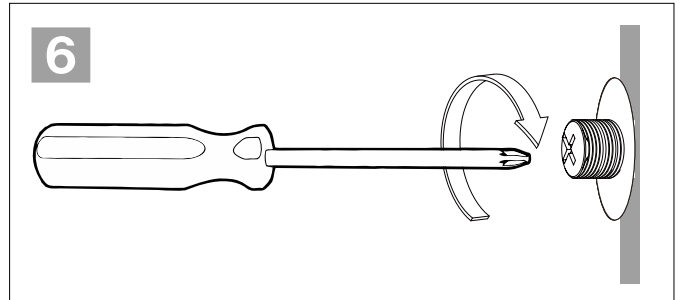
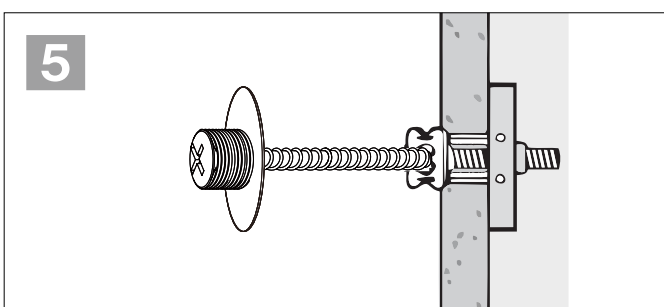
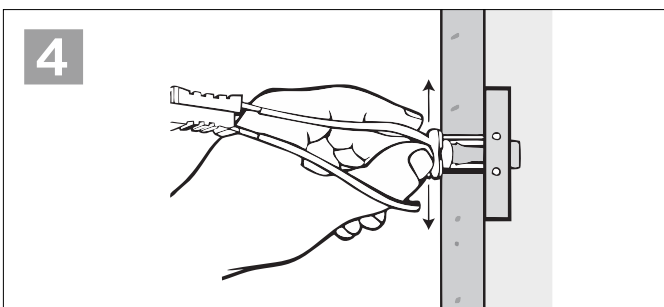
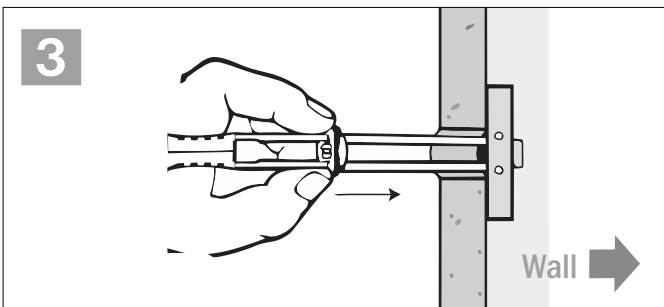
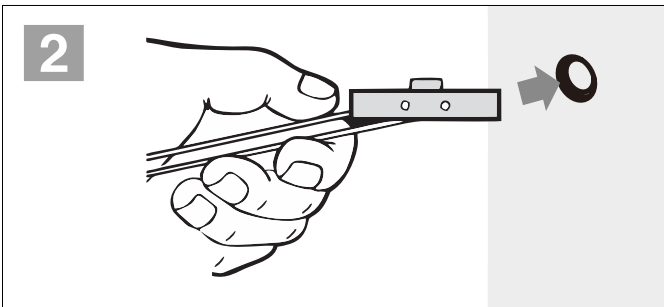
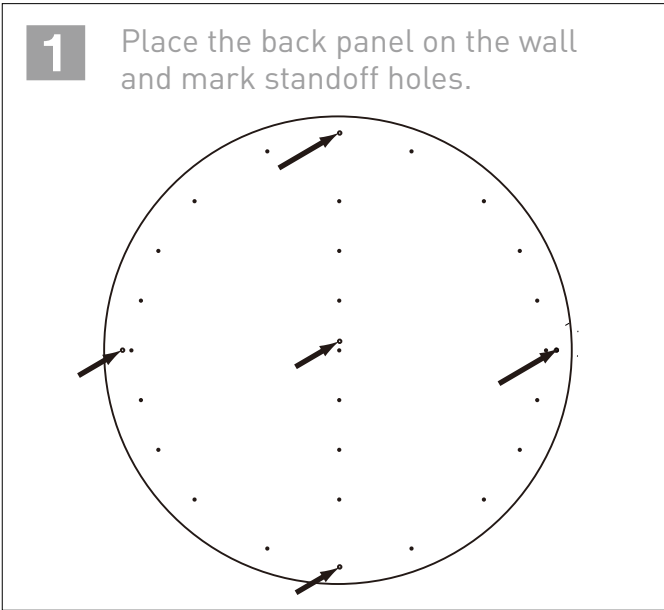


INSTALL THE STANDOFFS ON THE MARKED SPOTS ON THE WALL

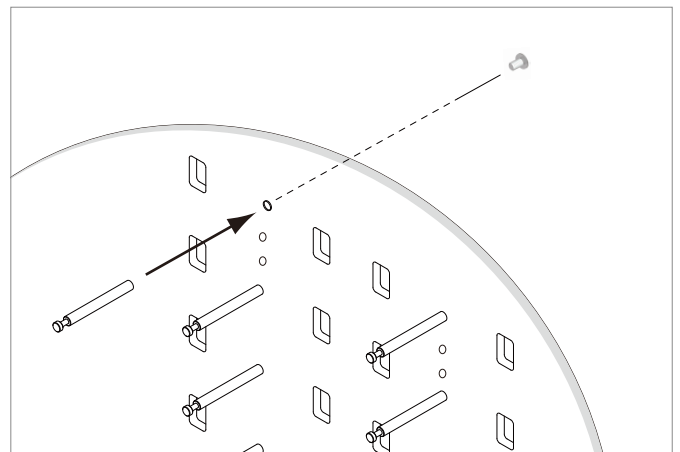


PANEL WALL MOUNTING

Install the standoffs on the marked spots on the wall - mount acrylic panel as the last step



PINS



MIRROR PANEL MOUNTING

