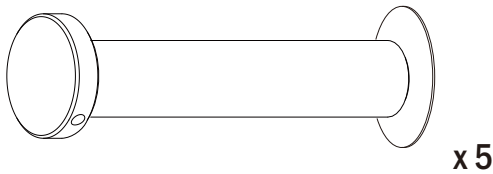
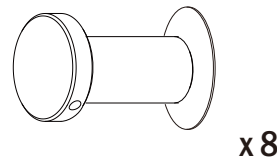


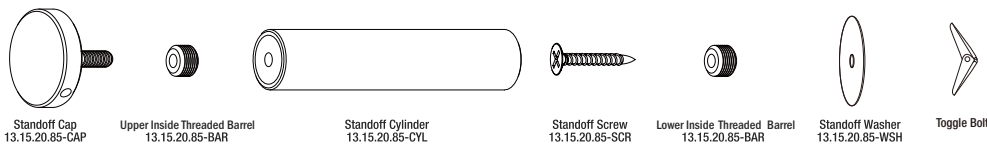
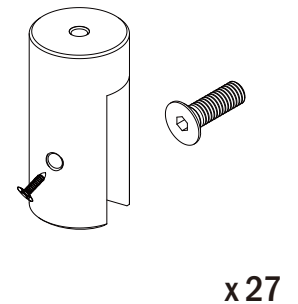
for the round panel



for the frame

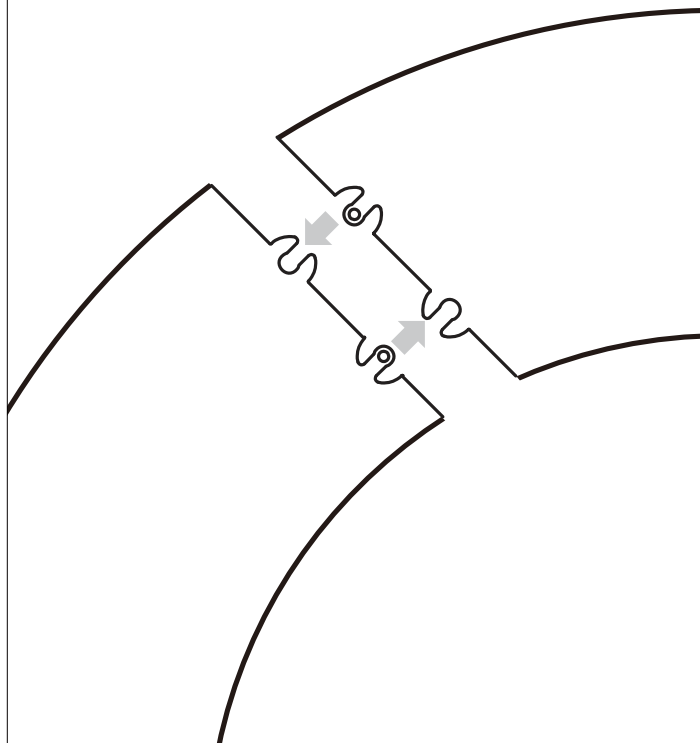


for shelves

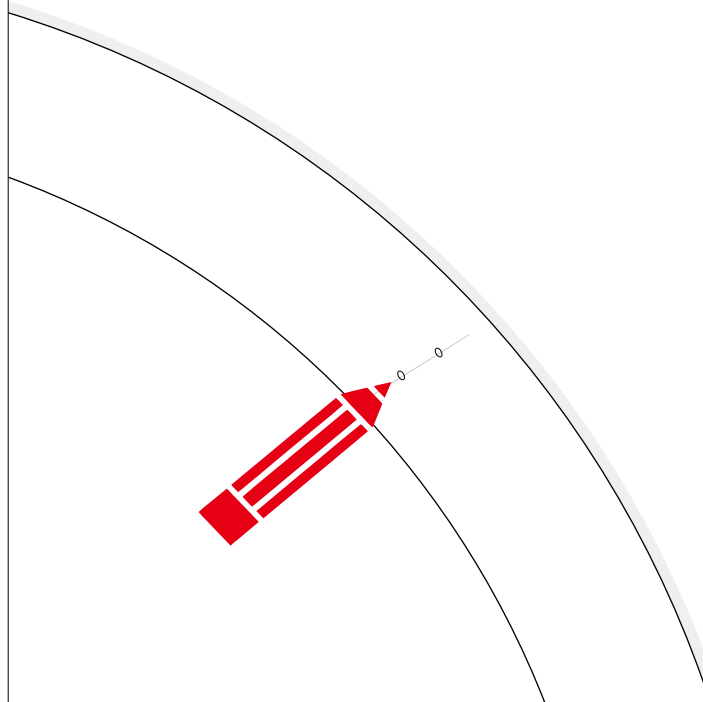


FRAME WALL MOUNTING

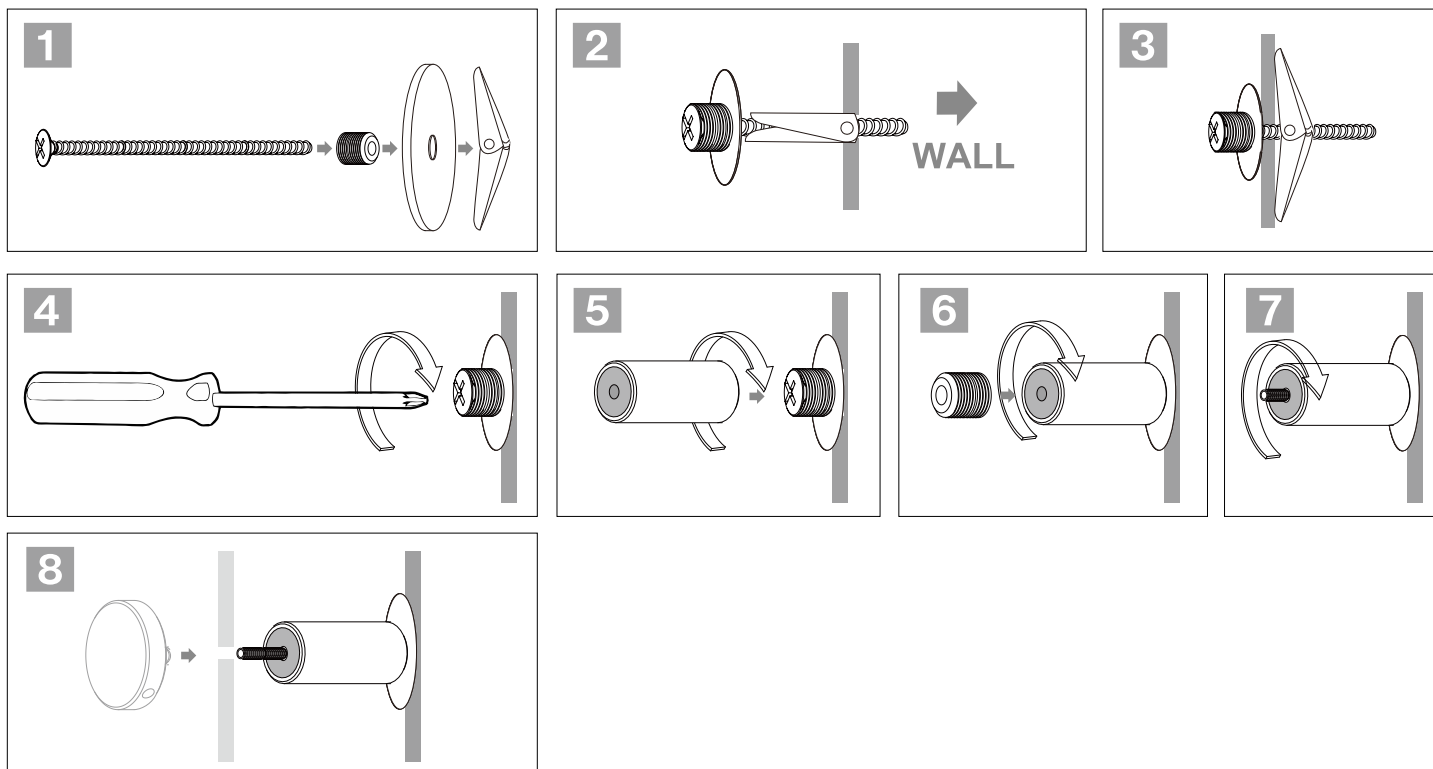
Corners of Acrylic frames interlock and attached to the wall with 1" standoffs.



Place the back panel on the wall and mark standoff holes.

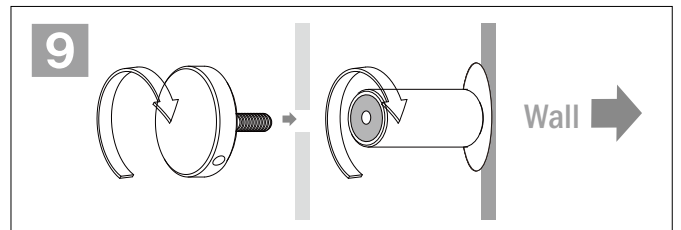
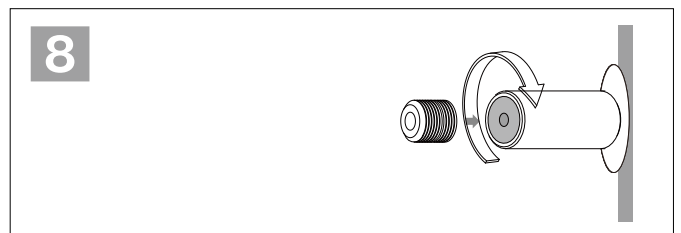
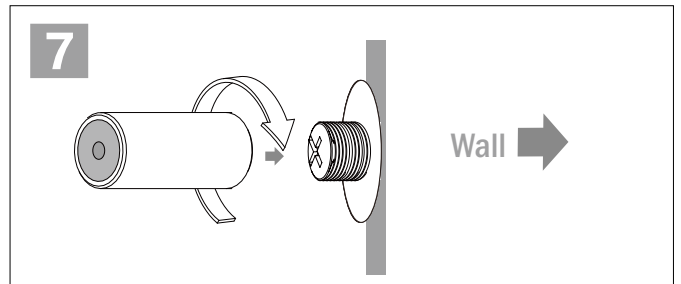
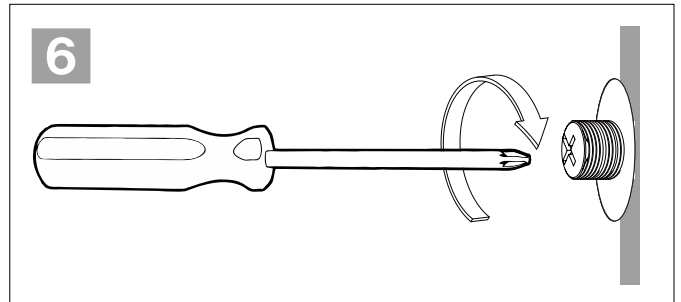
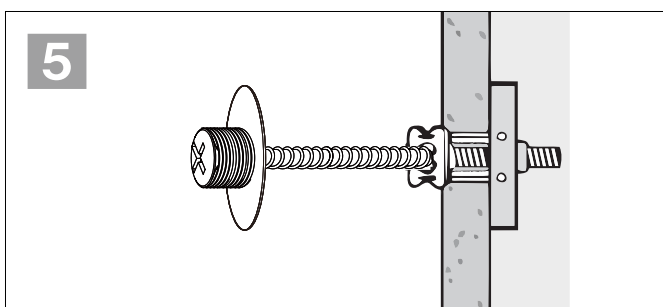
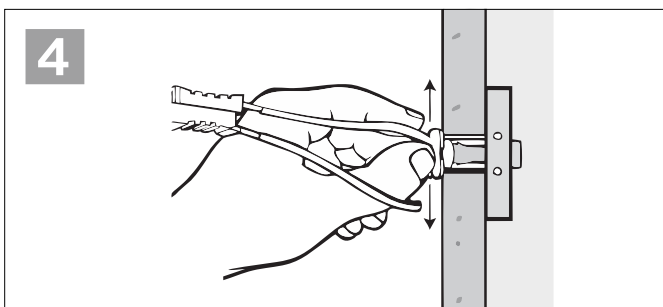
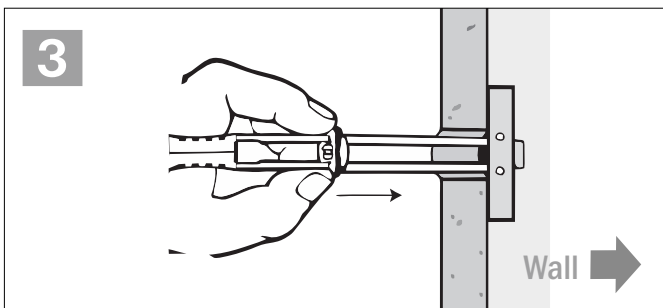
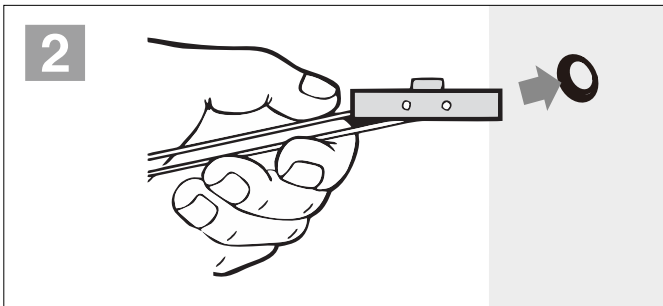
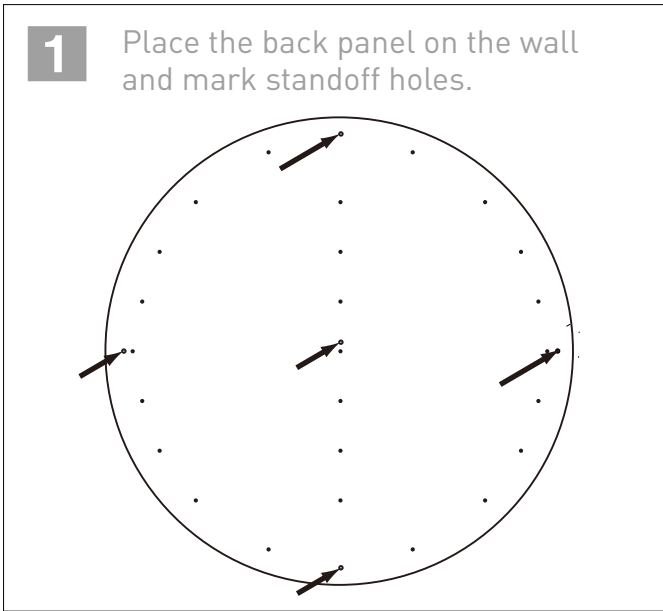


INSTALL THE STANDOFFS ON THE MARKED SPOTS ON THE WALL



PANEL WALL MOUNTING

Install the standoffs on the marked spots on the wall - mount acrylic panel as the last step



SHELVES

