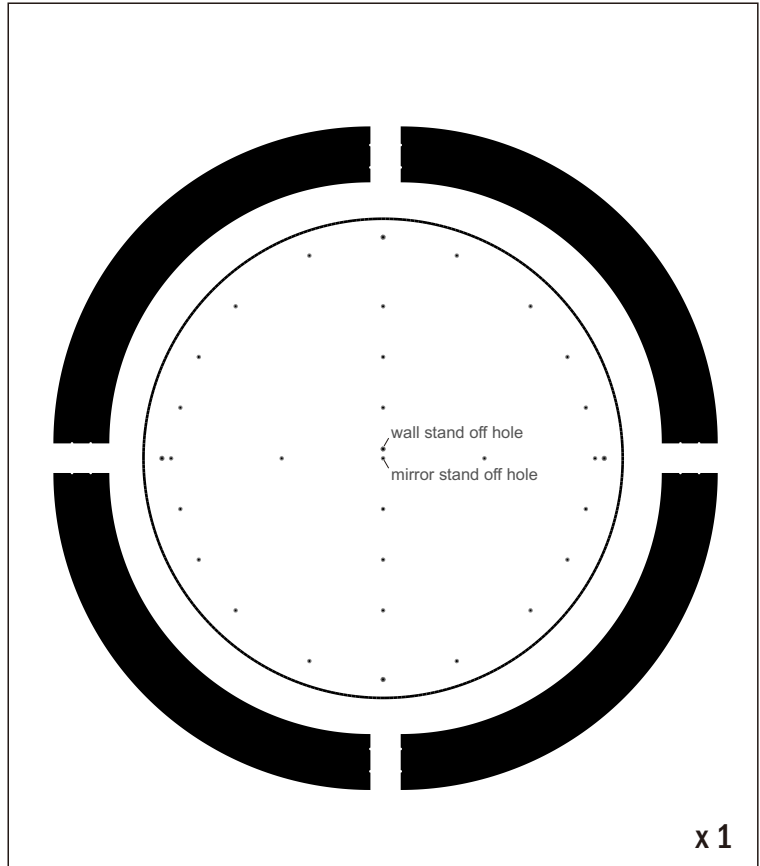
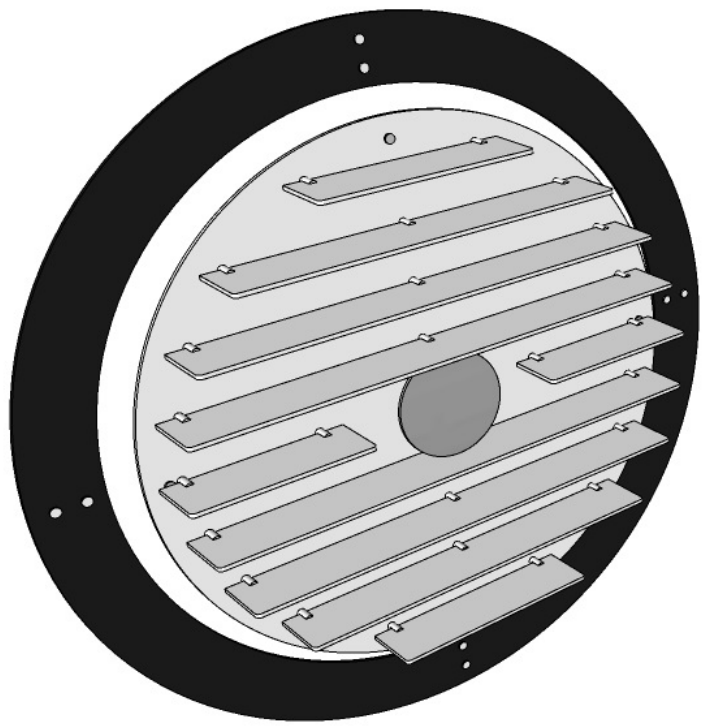
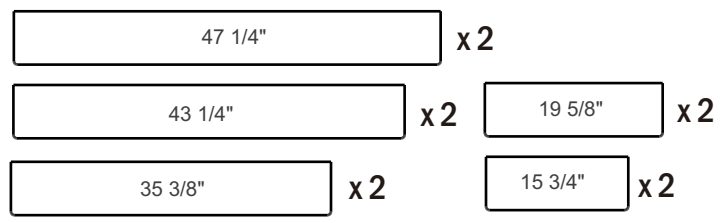


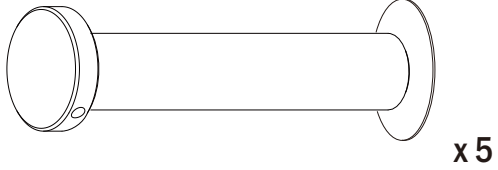
Sphere with shelves and mirror



x 1

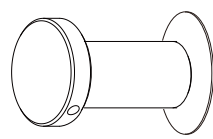


for the round panel



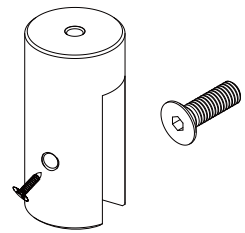
x 5

for the frame

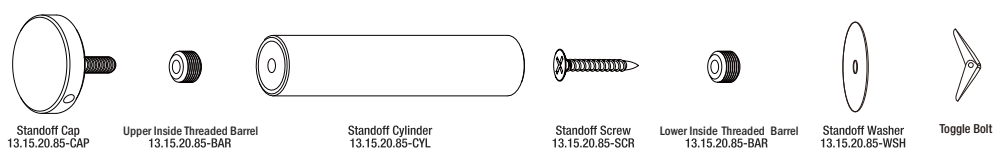


x 8

for shelves



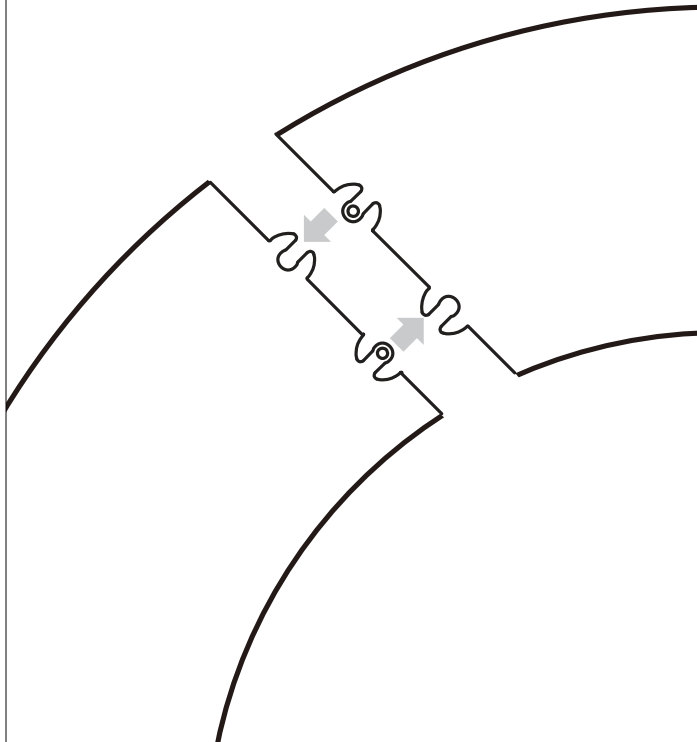
x 26



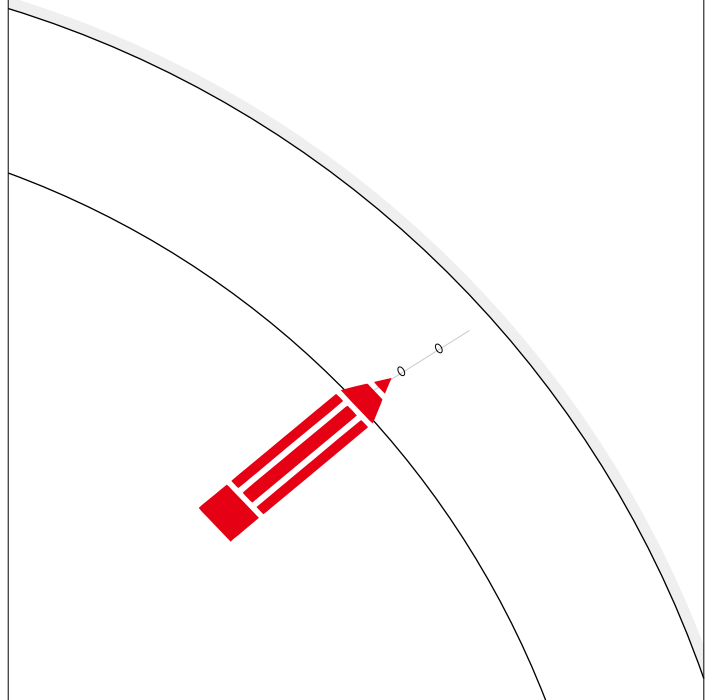
Standoff Cap 13.15.20.85-CAP Upper Inside Threaded Barrel 13.15.20.85-BAR Standoff Cylinder 13.15.20.85-CYL Standoff Screw 13.15.20.85-SCR Lower Inside Threaded Barrel 13.15.20.85-BAR Standoff Washer 13.15.20.85-WSH Toggle Bolt

FRAME WALL MOUNTING

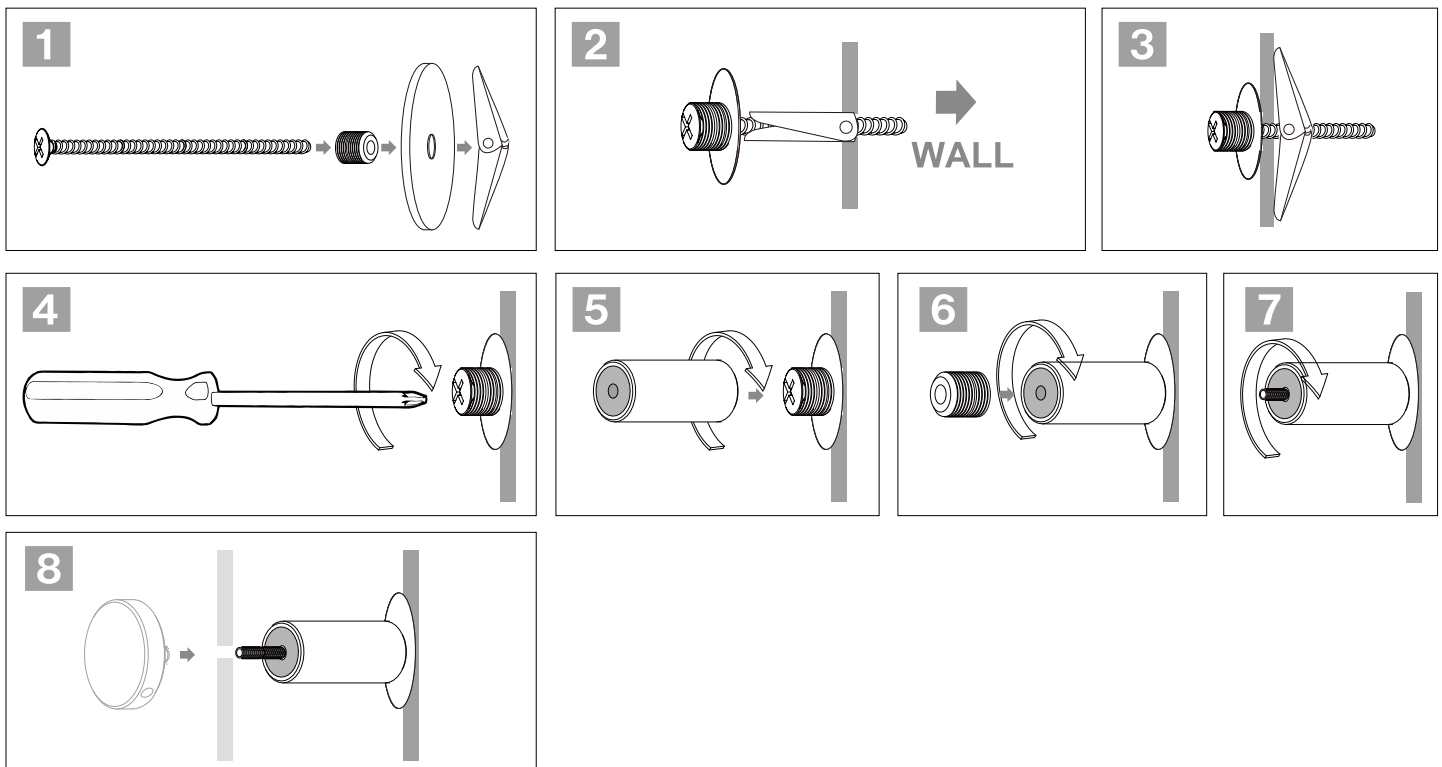
Corners of Acrylic frames interlock and attached to the wall with 1" standoffs.



Place the back panel on the wall and mark standoff holes.

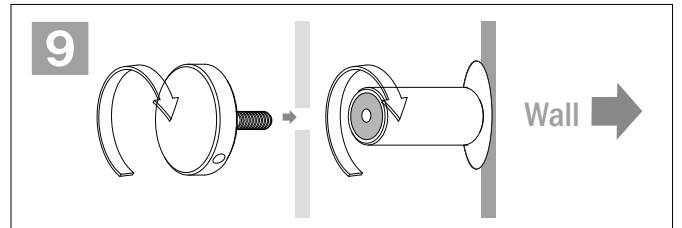
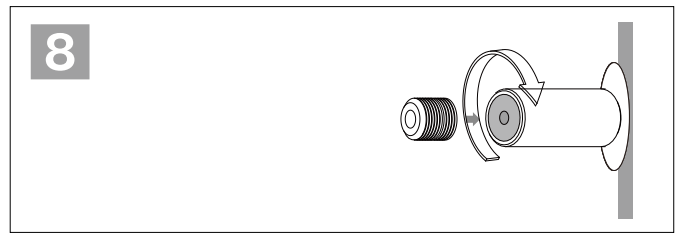
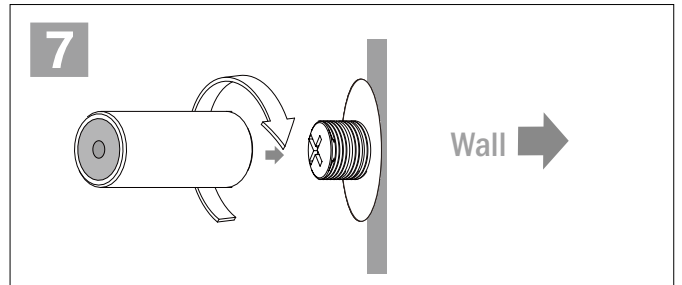
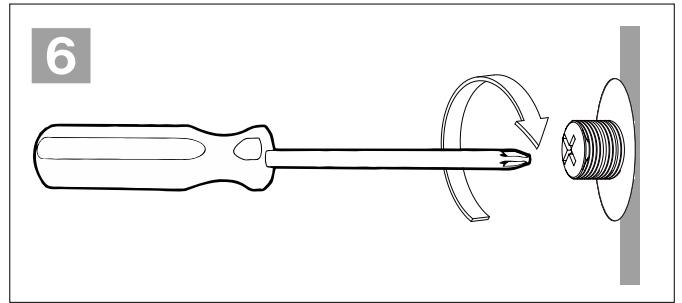
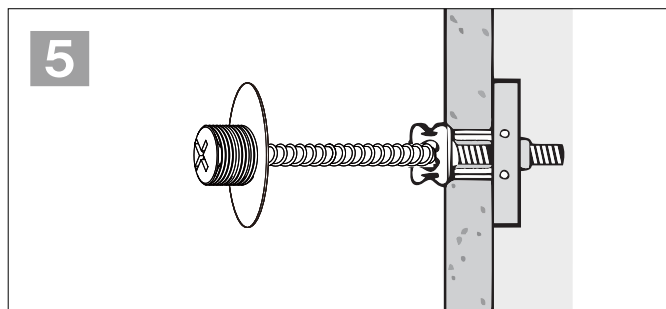
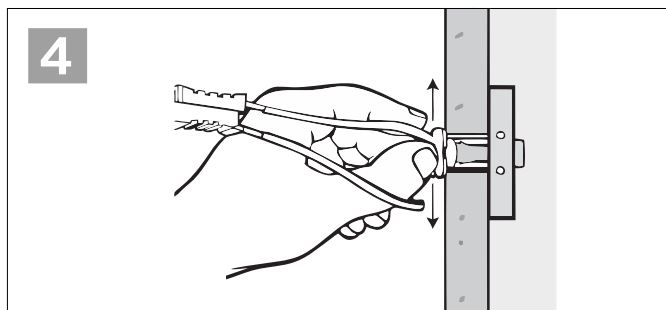
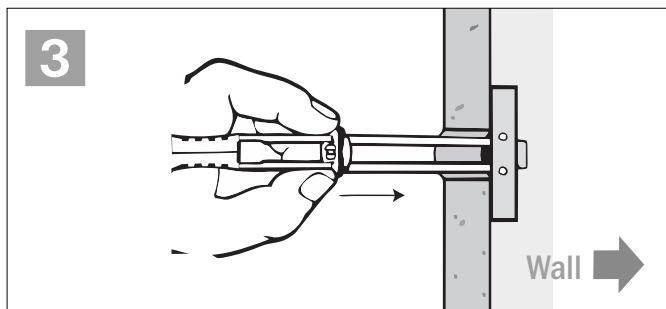
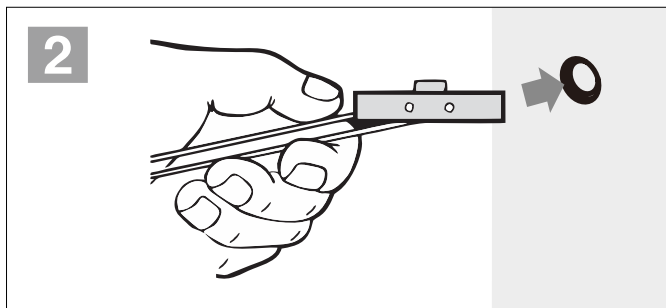
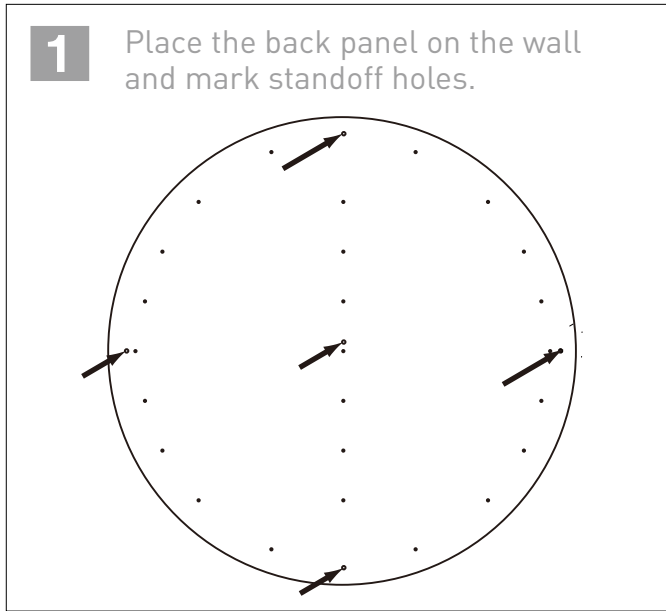


INSTALL THE STANDOFFS ON THE MARKED SPOTS ON THE WALL

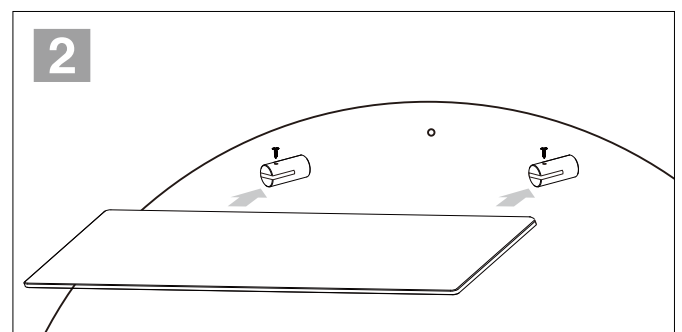
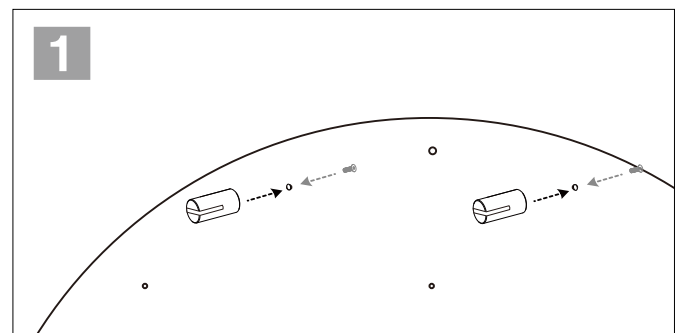


PANEL WALL MOUNTING

Install the standoffs on the marked spots on the wall - mount acrylic panel as the last step



SHELVES



MIRROR PANEL MOUNTING

