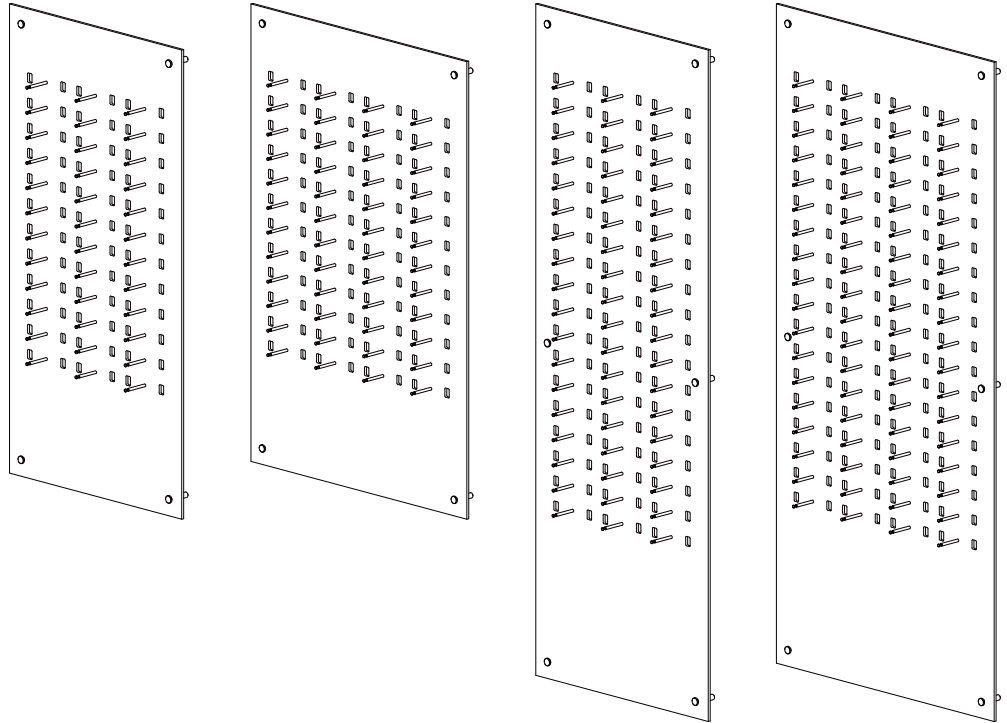
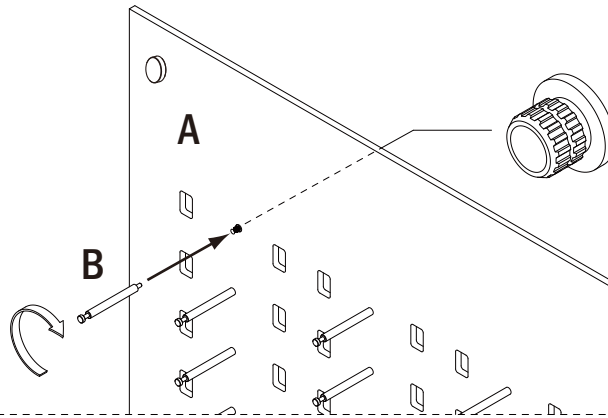


APP.7.14 APP.9.14 APP.7.20 APP.9.20

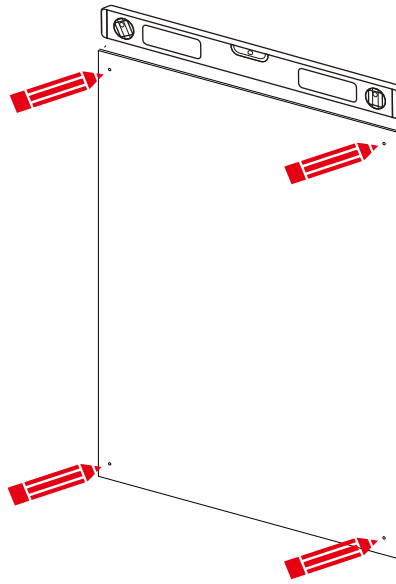


<p>A x 1</p> <p>APP.7.14 APP.9.14 APP.7.20 APP.9.20 1400x700 1400x900 2000x700 2000x900</p>	<p>B</p> <p>APP.7.14.PIN 1400x700 36x APP.9.14.PIN 1400x900 48x APP.7.20.PIN 2000x700 54x APP.9.20.PIN 2000x900 72x</p>	<p>x 1</p>	
<p>C Standoff (#13.15.20.85)</p> <p>4 to 8 (Based on your order)</p>		<p>D Butterfly Anchors + Screws</p> <p>equal number to standoffs</p>	
<p>Standoff Cap 13.15.20.85-CAP Upper Inside Threaded Barrel 13.15.20.85-BAR Standoff Cylinder 13.15.20.85-CYL</p>		<p>Standoff Screw 13.15.20.85-SCR Lower Inside Threaded Barrel 13.15.20.85-BAR Standoff Washer 13.15.20.85-WSH Toggle Bolt</p>	
<p>APP.7.14 APP.9.14 x 4 APP.7.20 APP.9.20 x 6</p>			

Step 1

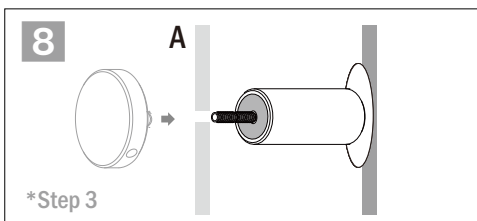
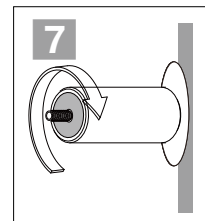
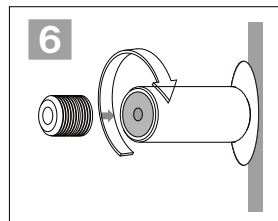
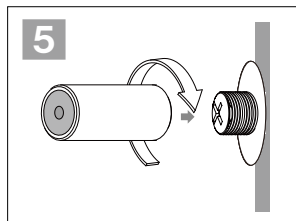
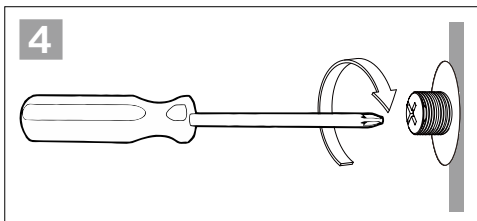
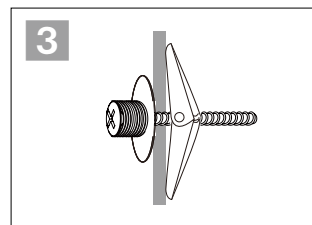
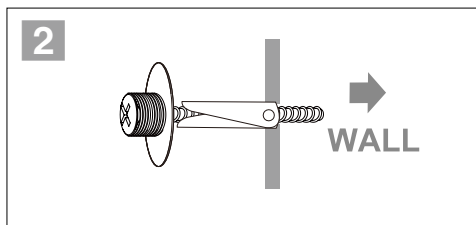
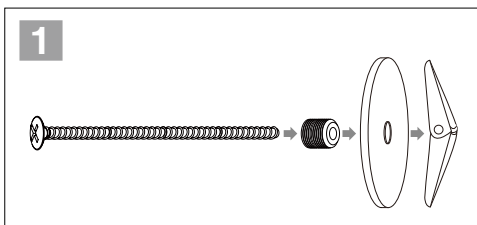


Step 2



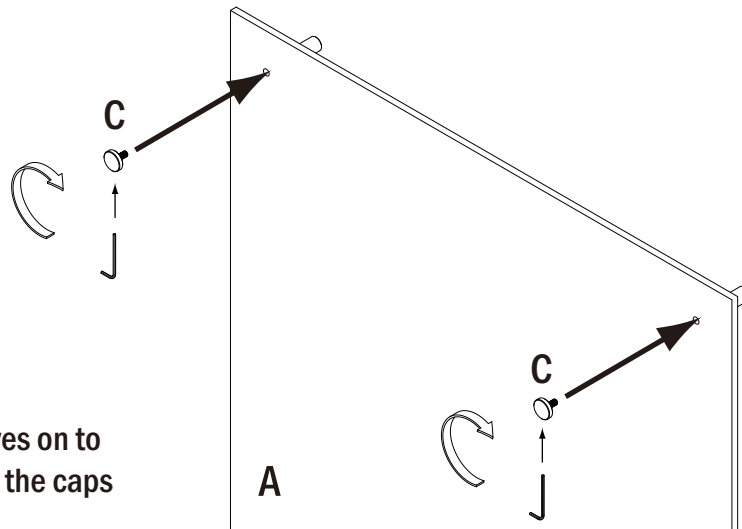
Place the back panel on the wall and mark standoff holes.

Step 3 Install the standoffs on the marked spots on the wall

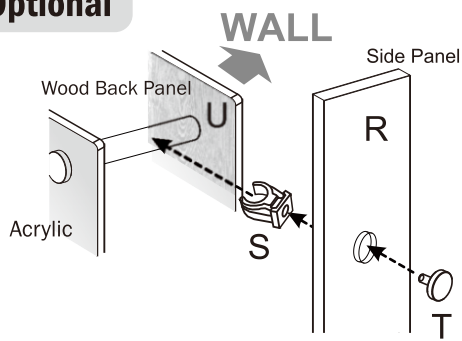


Step 4

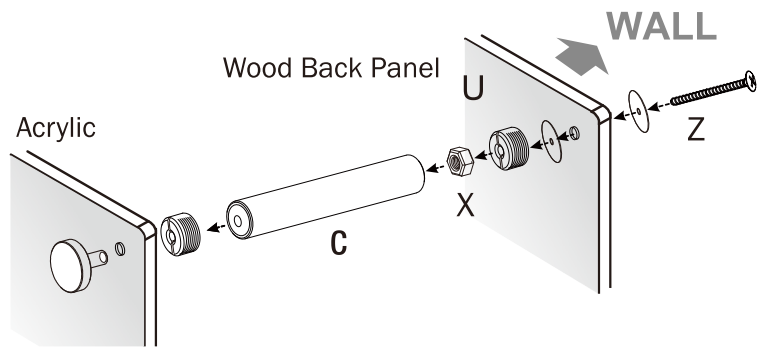
Place the complete panel and shelves on to the standoffs and secure them with the caps



Optional

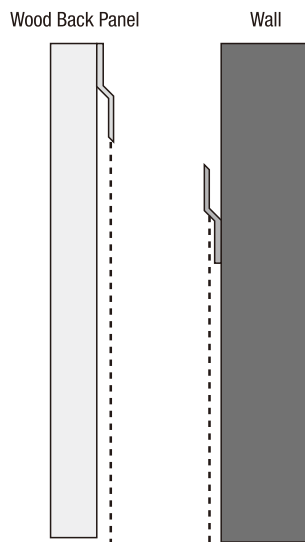


R x 1	S x 4	T x 4
Side Panel 3/8"	13.15.20.SIDE	13.15.20.85-CAP



U x 1	X x 4	Z x 4
Wooden Back Panel		1/2"-20 x 2-1/2" Round Combo w/nut-Zinc

Optional



This bracket is pre-attached to wood back panel

Attach this bracket to wall (use toggle bolt to attach bracket to wall)

