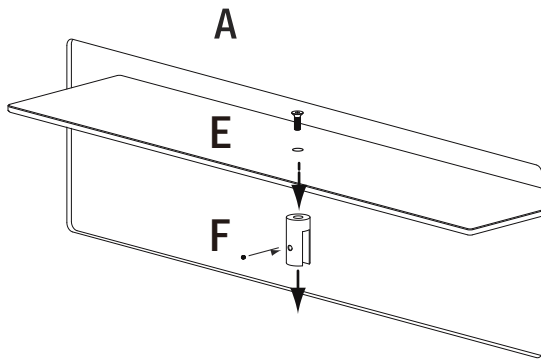


WV Single AP.WV.18.SING AP.WV.24.SING

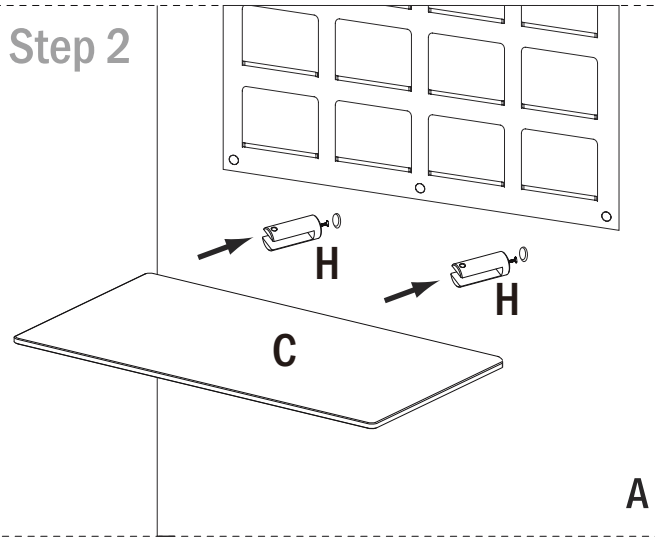


<p>A</p> <p>1×</p>	<p>B</p> <p>2×</p> <p>Side Panel 3/8"</p>	<p>C</p> <p>1×</p> <p>Single 3/8" Shelf</p>	<p>E</p> <p>Single 1/4" Shelf</p> <table border="1" style="width: 100%;"> <tr> <td>AP.WV.18.SING</td> <td>18×</td> </tr> <tr> <td>AP.WV.24.SING</td> <td>24×</td> </tr> </table> <p>F</p> <p>SHLF.STDF.38</p> <table border="1" style="width: 100%;"> <tr> <td>AP.WV.18.SING</td> <td>18×</td> </tr> <tr> <td>AP.WV.24.SING</td> <td>24×</td> </tr> </table>	AP.WV.18.SING	18×	AP.WV.24.SING	24×	AP.WV.18.SING	18×	AP.WV.24.SING	24×																
AP.WV.18.SING	18×																										
AP.WV.24.SING	24×																										
AP.WV.18.SING	18×																										
AP.WV.24.SING	24×																										
<p>D</p> <table style="width: 100%;"> <tr> <td style="width: 50%; text-align: center;"> <p>AP.WV.18.SING 6×</p> <p>Standoff (#13.15.20.85)</p> </td> <td style="width: 50%; text-align: center;"> <p>AP.WV.24.SING 9×</p> <p>Butterfly Anchors + Screws</p> </td> </tr> </table> <table style="width: 100%; text-align: center;"> <tr> <td></td> <td></td> <td></td> <td></td> <td></td> <td></td> <td></td> </tr> <tr> <td>Standoff Cap 13.15.20.85-CAP</td> <td>Upper Inside Threaded Barrel 13.15.20.85-BAR</td> <td>Standoff Cylinder 13.15.20.85-CYL</td> <td>Standoff Screw 13.15.20.85-SCR</td> <td>Lower Inside Threaded Barrel 13.15.20.85-BAR</td> <td>Standoff Washer 13.15.20.85-WSH</td> <td>Toggle Bolt</td> </tr> </table>			<p>AP.WV.18.SING 6×</p> <p>Standoff (#13.15.20.85)</p>	<p>AP.WV.24.SING 9×</p> <p>Butterfly Anchors + Screws</p>								Standoff Cap 13.15.20.85-CAP	Upper Inside Threaded Barrel 13.15.20.85-BAR	Standoff Cylinder 13.15.20.85-CYL	Standoff Screw 13.15.20.85-SCR	Lower Inside Threaded Barrel 13.15.20.85-BAR	Standoff Washer 13.15.20.85-WSH	Toggle Bolt	<p>G</p> <p>13.15.20.SIDE</p> <table border="1" style="width: 100%;"> <tr> <td>AP.WV.18.SING</td> <td>6×</td> </tr> <tr> <td>AP.WV.24.SING</td> <td>6×</td> </tr> </table> <p>H</p> <p>SHLF.STDF.38</p> <table border="1" style="width: 100%;"> <tr> <td>AP.WV.18.SING</td> <td>2×</td> </tr> <tr> <td>AP.WV.24.SING</td> <td>3×</td> </tr> </table>	AP.WV.18.SING	6×	AP.WV.24.SING	6×	AP.WV.18.SING	2×	AP.WV.24.SING	3×
<p>AP.WV.18.SING 6×</p> <p>Standoff (#13.15.20.85)</p>	<p>AP.WV.24.SING 9×</p> <p>Butterfly Anchors + Screws</p>																										
Standoff Cap 13.15.20.85-CAP	Upper Inside Threaded Barrel 13.15.20.85-BAR	Standoff Cylinder 13.15.20.85-CYL	Standoff Screw 13.15.20.85-SCR	Lower Inside Threaded Barrel 13.15.20.85-BAR	Standoff Washer 13.15.20.85-WSH	Toggle Bolt																					
AP.WV.18.SING	6×																										
AP.WV.24.SING	6×																										
AP.WV.18.SING	2×																										
AP.WV.24.SING	3×																										

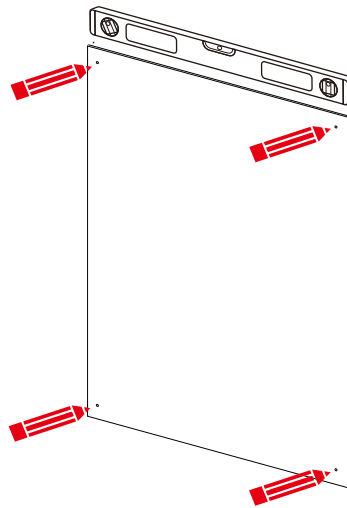
Step 1



Step 2

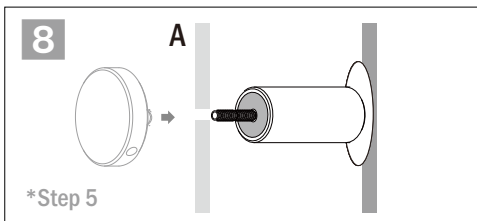
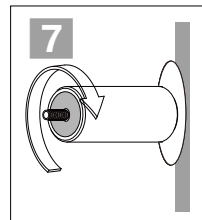
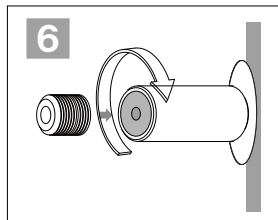
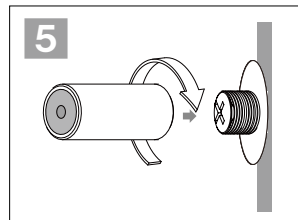
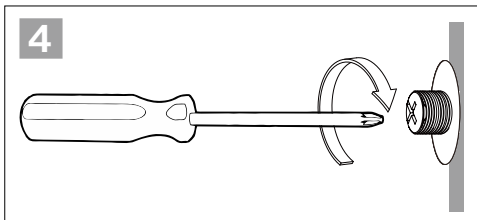
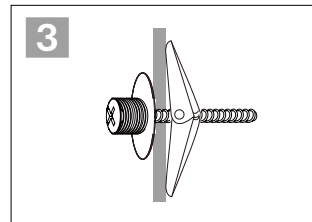
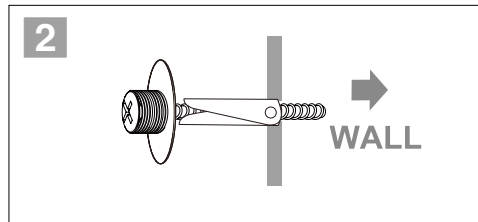
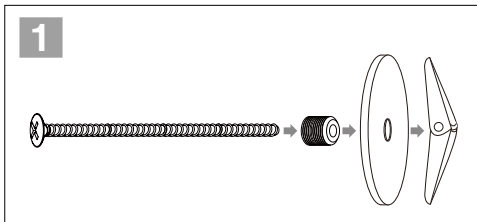


Step 3



Place the back panel on the wall and mark standoff holes.

Step 4 Install the standoffs on the marked spots on the wall



Step 5

Place the complete panel and shelves on to the standoffs and secure them with the caps

