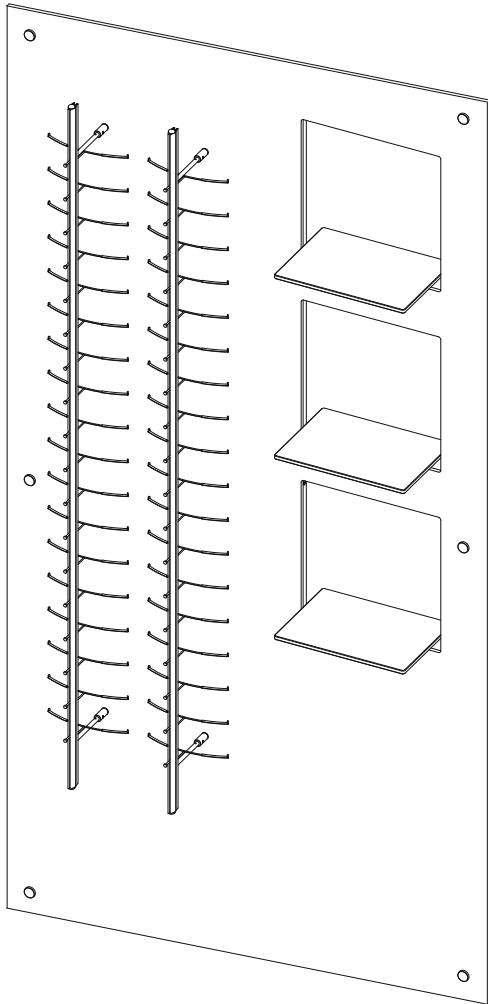
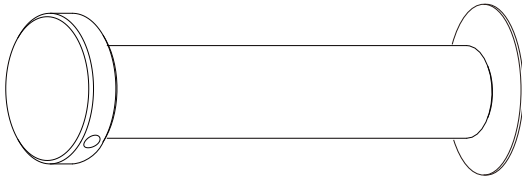


WV2/MTE



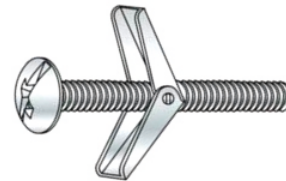
<p>A x 1</p>	<p>B x 2</p>
<p>C x 3</p>	<p>D x 3</p> <p>SHLF.STDF.38</p>
<p>E x 4</p>	<p>F x 8</p>

G x 6

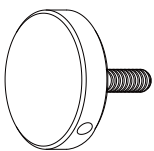


Standoff (#13.15.20.85)

H x 6



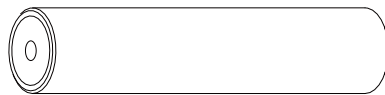
Butterfly Anchors + Screws



Standoff Cap
13.15.20.85-CAP



Upper Inside Threaded Barrel
13.15.20.85-BAR



Standoff Cylinder
13.15.20.85-CYL



Standoff Screw
13.15.20.85-SCR



Lower Inside Threaded Barrel
13.15.20.85-BAR



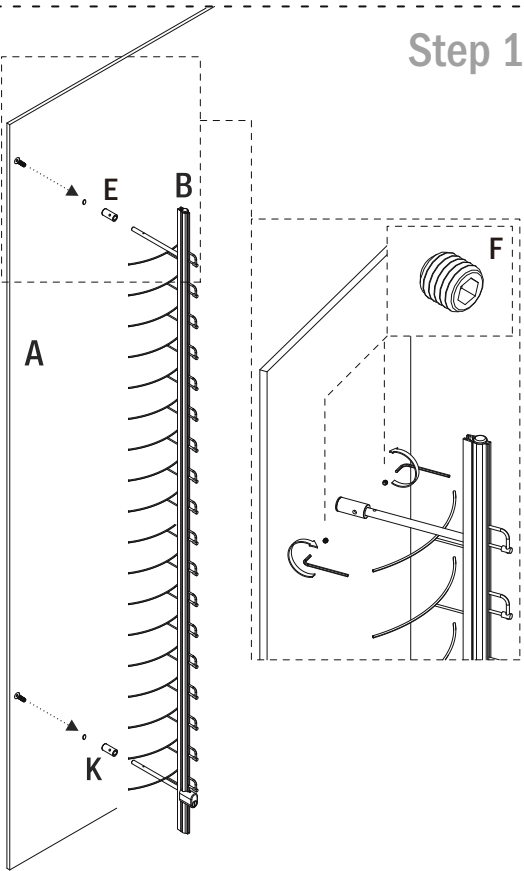
Standoff Washer
13.15.20.85-WSH



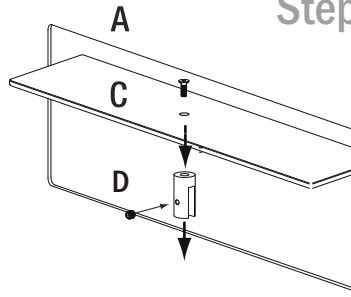
Toggle Bolt



Step 1

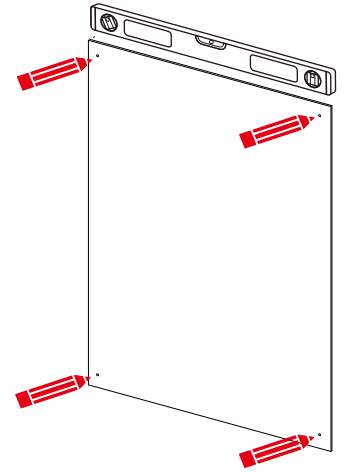


Step 2

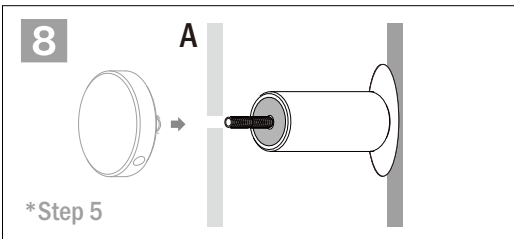
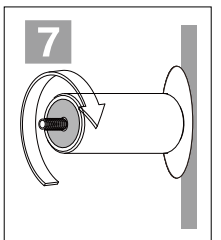
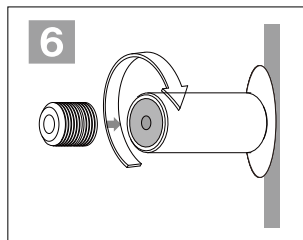
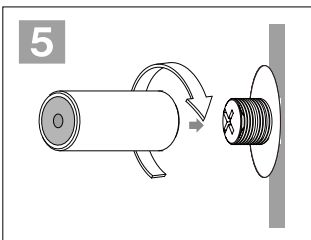
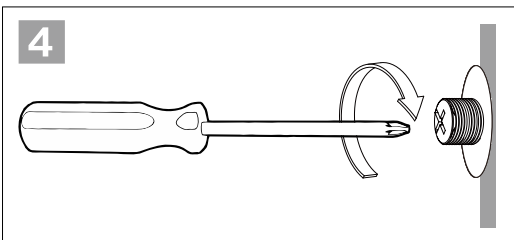
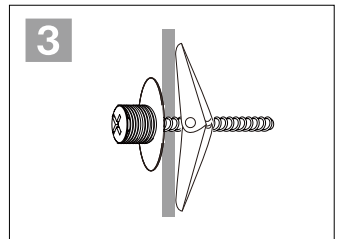
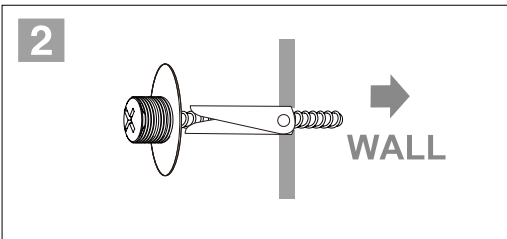
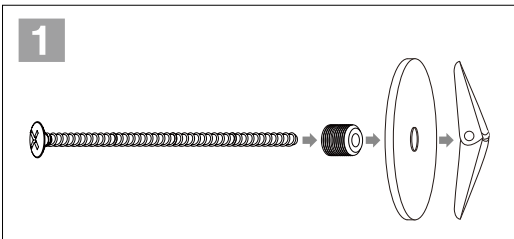


Step 3

Place the back panel on the wall and mark standoff holes.



Step 4 Install the standoffs on the marked spots on the wall



Step 5

Place the complete panel and shelves on to the standoffs and secure them with the caps

